

# ASAHI GROUP CORPORATE PROFILE



## ABOUT ASAHI GROUP

---

**Asahi Group is a company  
of expert engineers that supports  
the future of the society.**

Asahi Group consists of Asahi Technology Co., Ltd. (ATCL) and Asahi Power Management Co., Ltd. (APM).

ATCL is a company that supports the future society' s infrastructure such as energy by using its leading edge technology.

APM is a company that proposes solutions for effective utilization of resources.

ATCL has contributed to the society as a group of engineers since its inauguration. The techniques and know-how cultivated through the maintenance work of industrial plants such as power stations are utilized even in the field of renewable energy such as photovoltaic generation and wind power generation and have led to business expansion. ATCL was quick to start the business of drones that is collecting a lot of attention as a next-generation infrastructure to break new business grounds. ATCL is always ready to handle customers' requests and contributes to future society with its professional technology.

APM is a company that is able to propose solutions for the maximum use of resources in an effective manner. APM is particular about noticing the new worth in every resource and thus expand its business. We call the worth of the various resources "Power" , and utilizing this power to the maximum extent and reproducing it is essential. Moreover, not only renewable energy such as photovoltaic generation but also the energy that helps people to gather together, such as the utilization of idle land, leads to the future social energy and creates new value.

Asahi group keeps looking at resource energy and human energy from both sides of technology and solution, and creates new energy for the future society.

# COMPANY PROFILE



**Company name** Asahi Technology Co., Ltd.

**Representative** Yasuyuki Yukinaga (CEO)

**Location** [Head office]  
4-4-1, Aoyamanishi, Himeji, Hyogo,  
671-2224, Japan  
Tel: +81-79-267-5711 / Fax: +81-79-267-5712

[Shimane branch]  
Inside Shimane power plant of Chugoku Electric Power Co. Inc.,  
654-1, Katak, Kashima-cho, Matsue,  
Shimane, 690-0324 Japan

[Iwate branch]  
2-12-6, Higashianiwa, Morioka, Iwate, 020-0824 Japan

[Fukushima branch]  
213 Motooka, Motomachinishi, Tomioka-cho, Futaba,  
Fukushima, 979-1151 Japan

[Tokyo branch]  
2F Itopia-kanda, 1-1 Kitanorimono-cho, Kanda,  
Chiyoda-ku, Tokyo, 101-0036 Japan  
Tel : +81-3-6384-0420 / Fax : +81-3-6384-0421

[Drone Masters School - Hyogo Himeji school]  
4-4-1, Aoyamanishi, Himeji, Hyogo, 671-2224 Japan  
Tel : +81-79-290-5691 / Fax : +81-79-290-5692

[Drone Masters School – Shimane Matsue school]  
396-4, Nishiiwasaka, Yakumo-cho, Matsue,  
Shimane, 690-2103 Japan  
Tel : +81-852-54-9666 / Fax : +81-852-54-9667

[Drone Masters School – Okayama Kita school]  
76-1, Musa, Kita-ku, Okayama,  
Okayama, 701-2141 Japan  
Tel : +81-86-229-9211

[Drone Masters School – Osaka school]  
3-13-1, Tatsumi-nishi, Ikuno-ku, Osaka,  
Osaka, 544-0012 Japan  
Tel : +81-6-6110-5240 / Fax : +81-6-4708-5246

**Foundation** Sep. 18, 1984

**Capital** JPY 66 million (including capital reserve JPY 8 million.)

**Detail of business** Plant business, Renewable energy business, Drone business

**Business license** Machine installation business, Piping business,  
Electrical working business,  
General Worker dispatching undertakings



**Company name** Asahi Power Management Co., Ltd.

**Representative** Nobuhiro Yukinaga (CEO)

**Location** [Head office]  
4-4-1, Aoyamanishi, Himeji,  
Hyogo, 671-2224 Japan  
Tel : +81-79-267-7711 / Fax: +81-79-267-7712

[Tokyo branch]  
2F Itopia-kanda, 1-1 Kitanorimono-cho, Kanda,  
Chiyoda-ku, Tokyo, 101-0036 Japan  
Tel : +81-3-6384-0420 / Fax : +81-3-6384-0421

**Foundation** Jun. 1, 2015

**Capital** JPY 20 million

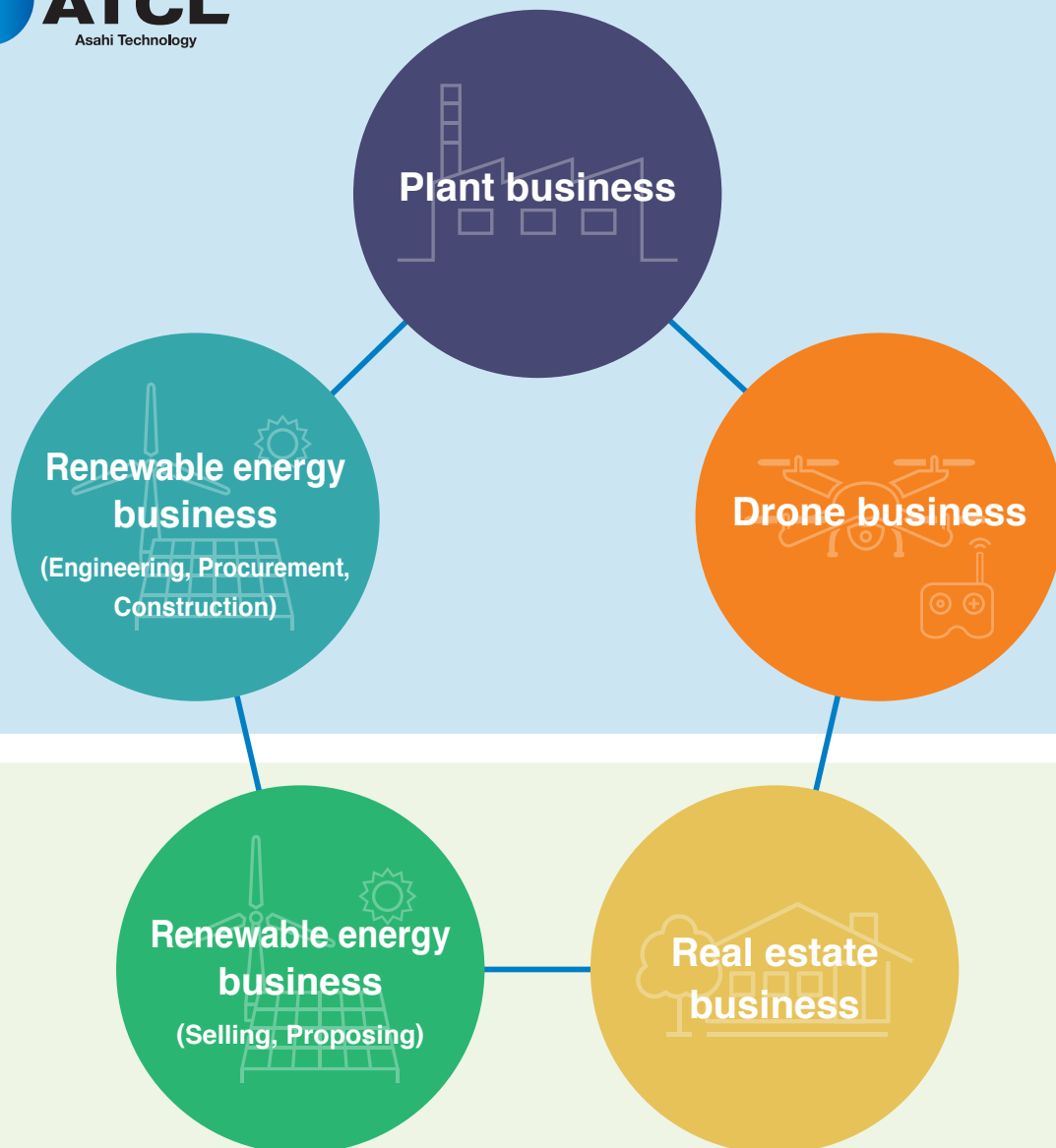
**Detail of business** Real estate business, Renewable energy business

**Business license** Real estate agency

## GROUP INFORMATION

Asahi Group, which started from the maintenance business of industrial plants such as power plants, has expanded its business fields by utilizing the techniques and know-how to meet the customer's needs and connecting with new proposals. We think that the techniques and solutions that our customers require from us include leaving behind results that produce a positive value instantly in consideration of the future society.

We meet our customer's expectations by providing proposal type services that resolve problems through new ideas and new values.

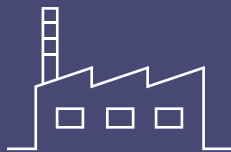








# PLANT



**We deal in the maintenance of industrial plants such as power plants. We value our mission according to which all parts or all equipment function properly based on the technical capability of the highest level, the ability to respond promptly and politely, and a thorough system for safety management.**

## Plant maintenance

The strong point of our plant business is the technical capability of the highest level and a thorough system for safety management. Since our team comprises specialist staff who have the most suitable skills for the work requiring special knowledge and qualification, we are able to manage a wide range of work and also exhibit our total ability. We engage in daily work with the responsibility with which we work in a job related to industrial plants that create the energy for supporting the society.







Plants such as a power plant consist of various measurement instruments, analyzers, and controllers. Daily inspection and routine inspection are essential to comprehend the condition of the equipment at all times and maintain safety and stable operation. We have achieved many results in maintenance of condensing continuous cleaning systems and heat exchangers until now. We check the soundness of equipment during overhauling, and perform lining including coating, repair of parts and replacement of spare-parts as necessary.

In the maintenance business that requires minute attention on safety and quality, there are many situations where a flexible judgement needs to be made. We have received a high evaluation from our customers because we give the most appropriate proposal to our customers based on our long-time experience.

#### [ Main services ]

- Overhauling of heat exchanger    ▪ Inspection of oil cooler
- Lining work    ▪ Supervision of overhauling of cooling water cooler
- Inspection of condensed continuous cleaning system



## Decommissioning of reactor of nuclear power plant

We carry out the decontamination operation of nuclear power plants that involves stopping the operation and decommissioning of the reactor before the demolition of the decided power plant, dismantling of the decontaminated equipment, and transportation based on the Nuclear Reactor Regulation Law. We make efforts to reduce exposure that is the highest risk, and carry out the decontamination operation while checking the situation in detail with maximum priority to safety.

Decontamination



Demolition



Withdrawal



Transportation



# RENEWABLE ENERGY BUSINESS

(Engineering, Procurement, Construction)



**We are consistently supporting the introduction of renewable energy that can contribute to the society, such as photovoltaic power generation and wind power generation. Since we are able to independently work from the design phase to maintenance after the completion process, we provide a high quality power generation system.**

## Photovoltaic generation

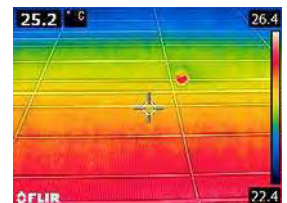
### EPC (Engineering, Procurement, Construction)

We have been handling various photovoltaic generation systems from low voltage power plant to mega solar power plants since starting the renewable energy department in the year 2013. We are able to provide a long-life and high quality photovoltaic generation system by carrying out processes such as designing (engineering), procurement, and construction as a one-stop operation.



### O&M (Operation and Maintenance)

Photovoltaic power plants have various risks that include natural disasters such as lightning, typhoon, etc., defects in the equipment and mechanical troubles. We support the best power generation business by controlling the condition of power generation facility through remote control and periodic maintenance. We perform efficient maintenance using drones in infrared inspection and cleaning robots used for cleaning modules in accordance with the scale of the power plant.







## Wind power generation

### EPC (Engineering, Procurement, Construction)

We plan the arrangement of the wind turbine at the best place after analyzing the wind direction of the construction place and the wind speed. We procure the equipment that corresponds to the layout design and support from the design to the grid connection.



### O&M (Operation and Maintenance)

We propose the remote control, operation, and maintenance in small wind power plants. We support the long-time operation of equipment through after-sales support, troubleshooting for the troubles that may occur, and periodic inspection.



## Distributor business

We are the distributors of Tozzi Green S.p.A. (Italian company) that specializes in the design and manufacture of wind power generators, and popularizes the technology of small wind turbines world-wide. We propose the sales, construction, supervision, and after-sales support of the wind power generator that holds the record of being at the top of the world in electric power generation.

**TOZZIgreen**

[Handling model]

- TN535
- Victory 16-20



# DRONE BUSINESS



**We run schools to develop professionals who have acquired technical knowledge and professional skills, and propose services for the purpose of industrial use. We are considering the expansion of business in the field of education such as Drone's programming school in the future.**

## School operation

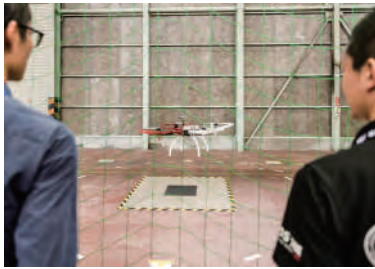
We run four (4) schools of "Drone Masters School (DMS)", mainly in western Japan, which train drone pilots. We prepare a practical curriculum that helps in the acquisition of skills and knowledge for the purpose of becoming a pilot, ranging from aerial photography as a hobby to industrial use. A person who has completed training is able to get the certification of DPA (Registered management organization by Ministry of Land, Infrastructure and Transport) and proceed with the application for the permission of official flying.

It is possible to acquire more practical knowledge and skills of the plant business and the maintenance of renewable energy business because we have acquired the knowledge and skills through inspection of the plant and renewable energy by Drones.



### Drone Masters School

Hyogo Himeji school, Shimane Matsue school,  
Okayama Kita school, Osaka school



## Sales

We sell mainly different types of industrial drones for the purpose of technical use such as Inspection of the Infrastructure, pesticide spraying, and aerial photography, and also sell some Toy-Drones as hobby. You can contact our staff having technical knowledge and we support the purchase of the most suitable drone according to the purpose of the customer. Please feel free to ask about the setting method and the application for a permit for flying.



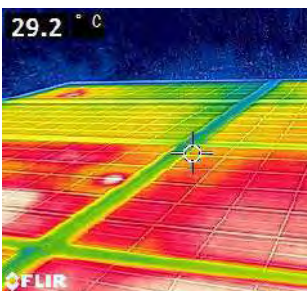


## Service

We propose services such as the inspection of photovoltaic power plants and external wall of equipment by using the visible light camera and infrared camera, pesticide spraying, and aerial photography.

The use of drones is further expected in identification of places where it is not possible for people to enter easily or it is dangerous to enter such as during the inspection of bridges and buildings, circumstantial investigation of disasters. We have already put the service into practical use in some parts.

We are pursuing the possibility and practicing the utilization of drones in the fields of education, welfare, agriculture, transportation, life-saving, etc., as a new infrastructure.



## Development

We have developed the wiring type power supply transportation heliport and control system for drones; commonly known as “D-road”, and also develop and propose proper drones and systems using drones according to the purpose of the customer. We contribute to the development of the drone technology.

# REAL ESTATE BUSINESS



We solve the problems related to utilization method of empty houses and open spaces (idle land) through our own solution propositions. We provide human mobility and regional activation by finding the new value that is the hidden potential in suburban areas.

## Purchase and sales of real estate

We study the purchase of general real estate and real estate of which buyers are not easily available while considering the possibility of applications that make use of renewable energy generation. We make arrangements for the desirable regions, desirable area, and desirable budget, etc. for customers wanting to purchase real estate, and search for appropriate land and real estate.

### Flow of purchase and sales





## Utilization of real estate

We propose a new usage method for idle lands that are difficult to operate and maintain. We reproduce the value of assets through the introduction of the parking, garage, material storing site, dog-run, photovoltaic power plant, wind power plant which make use of natural energy. And we convert them to an energy by which people can be gathered together.



## Management of real estate

We propose methods for earning revenues from real estate such as empty houses and open spaces, inherited lands or inherited apartments, which are difficult to be managed by an individual. Moreover, we also carry out the bothersome work on behalf of the owner, if necessary.



## Consultation counter for inheritance of real estate

We have a consultation counter for inheritance and real estate managed by professionals of real estate and inheritance. There is a difference in procedures and preparations depending on the contents of inheritance and family condition. We give a proper support to the details of consultation by holding periodic study meetings and private consultations.

Please leave the inheritance of real estate to us!

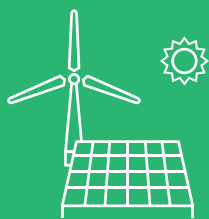


不動産相続の  
相談窓口

“Consultation counter for  
inheritance of real estate”



# RENEWABLE ENERGY BUSINESS



## 〈Sales · Proposal etc.〉

We consult and propose the introduction of renewable energy such as photovoltaic power generation and wind power generation as a company that proposes the solution for the efficient use of resources. We expand business while making alliances or partner relationships with corporation companies across the whole of Japan based on various efficient information.

## Proposal of renewable energy power plant

### Proposal of power plant for investment or commercial use

We propose to introduce power plants that create a long-time stable income with Feed In Tariff (FIT). We give a series of proposals from searching for land to maintenance after construction and installation for private investors, funds, and corporation.

### Business Continuity Plan (BCP)

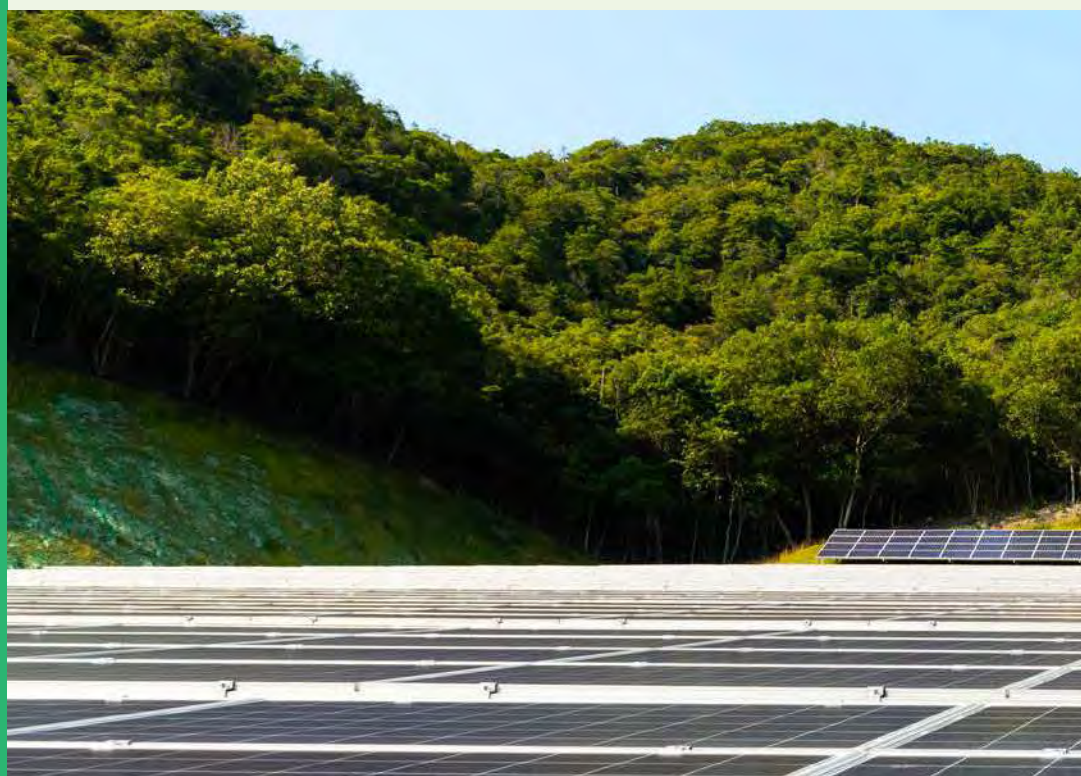
We propose to introduce the renewable power plant to enable securing power that is solely for use by our own company. This enables continuation of business if the power passing through the power network is cut off due to disasters such as massive earthquakes or big typhoons.

### Proposal of power plant for environmental measure such as RE100 project

What is the RE100 project?

RE100 is a global corporate leadership initiative bringing together influential businesses committed to 100% renewable electricity and RE100's purpose is to accelerate change towards zero carbon grids, at global scale.

Since many companies in Japan announced joining in the recent years, we propose power plants to let them achieve their goals.





## Maintenance service of power plants

We always check the defects in power plants and nominal power generation to continue the long-time power generation business. We are able to manage a wide range of maintenance activities all over Japan through our collaboration companies. We have put in place a system for quickly responding to troubles.



## Sales

We sell materials such as power conditioners and modules that consist of power plants, maintenance material, and environmental material such as storage batteries.

We offer appropriate proposals to meet the requests for the size or design of power plants. Please feel free to contact us in this regard.





**Asahi Technology Co., Ltd.**

4-4-1, Aoyamanishi, Himeji, Hyogo, 671-2224 Japan

<https://atcl.co.jp/en/>